

# MINING



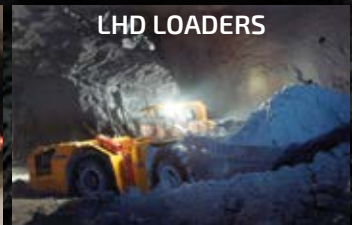
UTILITY VEHICLES  
DUMP TRUCKS  
LHD LOADERS  
SCALER  
GRADER



UTILITY VEHICLES



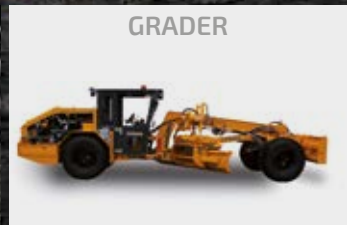
DUMP TRUCKS



LHD LOADERS



SCALER



GRADER

SAFETY · MAINTENANCE · EXPLOSIVES · TRANSPORT · PRODUCTION



SINCE 1968



*...the people who care*



# FAMILY COMPANY WITH TRADITION



... since 1968

## THE COMPANY

The requirements in mining and tunnel construction, especially those in underground mining, are highly diverse. Hermann Paus Maschinenfabrik has been developing and producing customised quality vehicle and machinery solutions for over 50 years.

Since the company was founded in 1968, lifting technology, construction equipment and industrial vehicles have continued to be produced with the same aim of always delivering the best solution for customers. In 2018, Paus celebrated its 50th anniversary. 50 years of „Paus.... the people who care“, which means fostering dialogue with industry insiders and customers. Only in this way can we inspire as the preferred, innovative partner with individual solutions for the transport and safety of people and materials.

## „...THE PEOPLE WHO CARE“

By fulfilling the slogan „...the people who care“ Paus has gained an excellent reputation on national and international level in the respective industries. To continue to uphold this reputation, Paus works continuously to meet various customer requirements. The wide variety of extreme conditions in the underground mining industry makes it one of the most challenging industries. Paus is certified in accordance with ISO 9001 and builds individualised and customised mining and tunnel machines with the „Made in Germany“ commitment to quality.

Different vehicle solutions for individual purposes can be delivered on the basis of standard platforms. This means that the constant, high quality is already part of the manufacturing process.





# PAUS ...THE PEOPLE WHO CARE

## INDIVIDUAL

### WE GIVE YOU A SOLUTION THAT IS AS UNIQUE AS YOUR REQUIREMENTS

All Paus underground vehicles are explicitly designed and built for underground mining and tunnelling. The Uni and MinCa series are examples of individual transport and production solutions. They are designed as platform vehicles and are available with a fixed superstructure or with a quick-change system. With the quick-change system it is possible – depending on the task – to change easily and quickly between different superstructures.

The MinCa 18 A is also an auxiliary vehicle. The range extends from configuration as a transporter for personnel or material, as a service or mine rescue vehicle to combinations of superstructures for special applications.

The smaller MinCa 5.1 is very well adapted to the rough conditions, not only for use in mining with narrow galleries. As an equipment version it can be configured as a passenger transporter for five miners and still has space and sufficient payload for the often heavy equipment. With its all-wheel drive, it is perfectly prepared for use on difficult road conditions. The MinCa 5.1, an extremely

robust auxiliary vehicle adapted to the challenging underground conditions, has a small turning radius and offers an increased level of safety with its oil-immersed multi-disc brakes and redundant braking system. A safe and reliable vehicle that is now also available as a battery-powered MinCa 5.1 E version.

All Paus vehicles are maintenance-friendly, safe, ergonomic and functional. At the same time, they offer an economic advantage due to their high availability and durability. They also meet international safety requirements for the use of mobile machinery in mining and can be individually supplemented with additional safety equipment. All vehicles are also in CE certified available.



# SOLUTION SCOUT

| <div>Mining applications</div> <div>Paus vehicle solutions</div> | EX-protected                      | Scaling            | Concrete processing         | Mine rescue   | Lifting  | Personnel transportation     | Production machines      | Service                   | Road maintenance                            | Charging and blasting                               | Track Maintenance                 |
|--|-----------------------------------|--------------------|-----------------------------|---|--|------------------------------|--------------------------|---------------------------|---|---|-----------------------------------|
|  | Vehicles for gas endangered areas | Gallery Protection | Concrete transport vehicles | Rescue vehicles/ Ambulance vehicles/ Fire fighting vehicles | Vehicles with hoisting technology (scissor/boom with basket) | Passenger transport vehicles | LHD Loaders/ Dump Trucks | Service/Lube/ Fuel trucks | Dinting machines/ Grader/ concrete spraying | Loading and transporting vehicles for ANFO/Emulsion | Track and ditch cleaning machines |
| PFL 8  |                                   |                    |                             |   |  |                              | x                        |                           |   |   |                                   |
| PFL 10   |                                   |                    |                             |   |  |                              | x                        |                           |   |   |                                   |
| PFL 20   |                                   |                    |                             |   |  |                              | x                        |                           |   |   |                                   |
| PFL 30   | x                                 |                    |                             |   |  |                              | x                        |                           |   |   |                                   |
| TSL 853 (T7)*  |                                   | (x)                |                             |   | x  |                              |                          |                           |   | (x)   |                                   |
| 853 S8   |                                   | x                  |                             |   |  |                              |                          |                           |   |   |                                   |
| 1253 S10   |                                   | x                  |                             |   |  |                              |                          |                           |   |   |                                   |
| UNI 50 Series  | x                                 | x                  | x                           | (x)   | x  | x                            | x                        | x                         |   | x   |                                   |
| UNI 40 Series  |                                   |                    | x                           | (x)   | x  | x                            | x                        | x                         |   | (x)   |                                   |
| Grader PG 10 HA  |                                   |                    |                             |   |  |                              |                          |                           | x   |   |                                   |
| MinCa 18 A Series  | x                                 |                    |                             | x   | x  | x                            |                          | x                         |   | x   |                                   |
| MRV 9000*  |                                   |                    |                             | x   |  |                              |                          |                           |   |   |                                   |
| MinCa 5.1 Series   |                                   |                    |                             | (x)   |  | x                            |                          | x                         |   | (x)   |                                   |
| PGB 450*   |                                   |                    |                             |   |  |                              | x                        |                           |   |   |                                   |
| PGB 1700*  |                                   |                    |                             |   |  |                              | x                        |                           |   |   |                                   |
| PMKM/-T/-S 8000-Series   |                                   |                    | (x)                         |   |  |                              | x                        |                           |   |   |                                   |
| PMKM/-T/-S 10000-Series  | x                                 |                    | (x)                         |   |  |                              | x                        |                           |   |   |                                   |
| PMKM/-T/-S 12000-Series  |                                   |                    | (x)                         |   |  |                              | x                        |                           |   |   |                                   |
| PSF 200*   |                                   |                    |                             |   |  |                              |                          |                           | x   |   |                                   |
| KRF 40*  |                                   |                    |                             |   |  |                              |                          |                           |   |   | x                                 |

Further solutions, versions and configurations on request

(x) special equipment

\*Product not shown in brochure

## UNI 50-SERIES

- The UNI 50 is a universally deployable, articulated-steered carrier for all tasks in underground mining. The UNI 50 series features as standard a load capacity of 8 to 15 tonnes with an engine output of up to 173 kW.
- The vehicle versions differ from the individual models in terms of their engines and exhaust emission levels, the design of the chassis, the payloads and are adapted to the individual requirements.
- The rugged and compact vehicle proves its value thanks to its low turning radius and exhibits this advantage on tight and curvy routes.
- The bodies are available as fixed superstructure or as flexible change system. With the last version, the carrier vehicle can be quickly and easily converted to various cassettes, such as tank superstructures, service superstructures or scissor lifts.

### HIGHLIGHTS:

**EXCELLENT OPERATING  
WEIGHT-PAYLOAD RATIO**

**POWER SHIFT WITH  
POSISTOP BRAKES**

**ROPS/FOPS DRIVER'S CAB**

**SERVICE-FRIENDLY AND ROBUST  
ENGINEERING**

**SMALL TURNING RADIUS**

**MULTI-VARIANT EQUIPMENT  
OPTIONS**





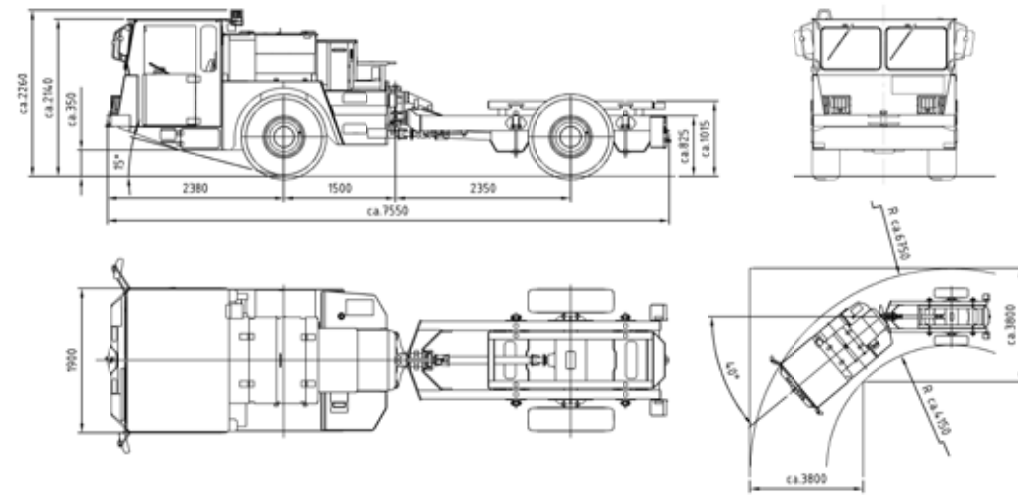
# UNI 50-SERIES

## TECHNICAL DATA:

|                           | UNI 50-2   | UNI 50-3     | UNI 50-4                  |
|---------------------------|--|--------------|---------------------------|
| Payload                   | to 8 t   | to 10 t      | to 15 t                   |
| Operating Weight          | 8 t**  | 9 t**        | 10 t**                    |
| Engine Variants           | Caterpillar, Cummins, Deutz, Mercedes Benz<br>different exhaust stages available |              |                           |
| Engine Power              | Up to 93 kW  | Up to 129 kW | Up to 129 kW              |
| Chassis                   | Articulated-steered chassis  |              |                           |
| Drive Unit                | Hydrodynamic drive with power shift  |              |                           |
| Axles                     | Rigid planetary steering drive axles<br>with oil-immersed multi-disk brakes      |              |                           |
| Tires                     | 12.00 x 20   |              | 12.00 x 24;<br>14.00 x 24 |
| Speeds                    | Up to 25 km/h  |              |                           |
| Gradeability              | to max. 40%  |              |                           |
| Environmental Temperature | -20°C up to +40°C  |              |                           |

Further solutions, versions and configurations on request.

\*\*depending on selected version



\*depending on construction the dimensions can vary



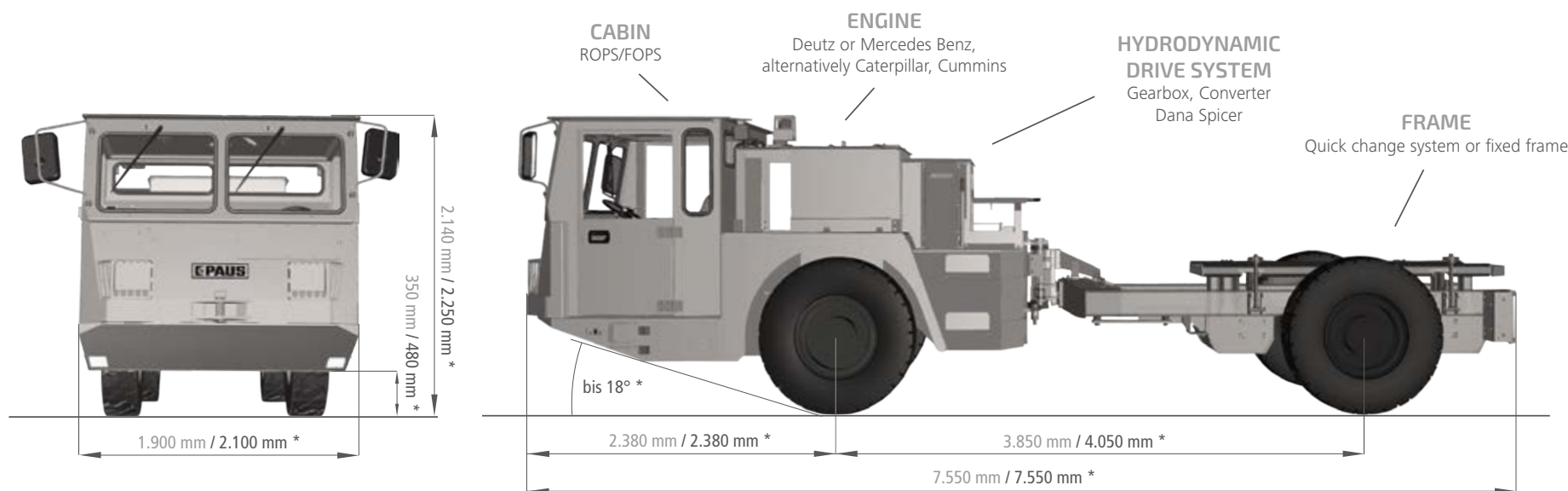
## UNI 50-SERIES

# THE KING OF VERSATILITY AMONG MINING VEHICLES

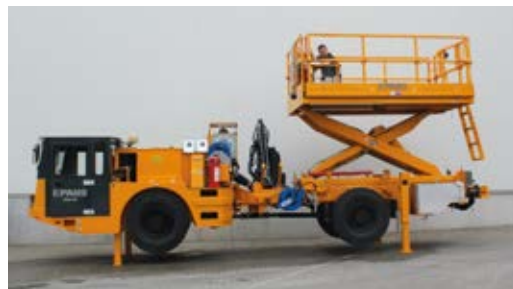
### BASIC VEHICLE:

There is almost no application in underground mining for which the UNI 50 cannot be equipped as an articulated-steered carrier. Safety aspects as well as service-friendly accessibility of all important components are important design details.

All vehicles can be equipped with various engines. The robust and compact vehicle convinces through an intelligently defined concept, the flexibility of an exchange system of individual fixed superstructures, in each case considering application-specific customer requirements.







## UNI 40-SERIES

- The UNI 40 is also a universally-deployable, articulated steered carrier vehicle, just like its big brother, the UNI 50. However, it is optimised in its design for working in narrow vein mines or for tunnel construction. The Paus UNI 40 series has a standard payload of 7 t with an engine output of up to 93 kW.
- The vehicle versions differ from each other in load capacity and can be equipped with various water-cooled engines.
- The rugged and compact vehicle has a turning radius of just 3300 mm and is therefore perfectly suited for the small galleries sizes in „narrow vein mining“ or for use in tunnel construction.
- The operator can choose between fixed and interchangeable bodies. The flexible exchange system allows a quick and easy exchange of cassettes for various applications such as service, concrete and explosives transport or lift technology.

# THE COMPACT MULTITALENT AMONG MINING VEHICLES

### HIGHLIGHTS:

**EXCELLENT OPERATING WEIGHT-  
PAYLOAD RATIO**

**HYDROSTATIC DRIVE**

**ROPS/FOPS DRIVER'S CAB**

**SERVICE-FRIENDLY  
DESIGN ENGINEERING**

**NARROW TURNING RADIUS**

**MULTI-VARIANT  
EQUIPMENT OPTIONS**





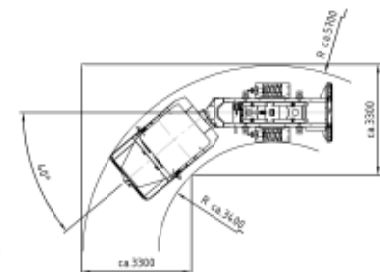
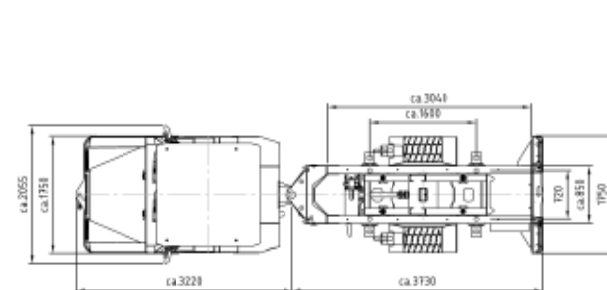
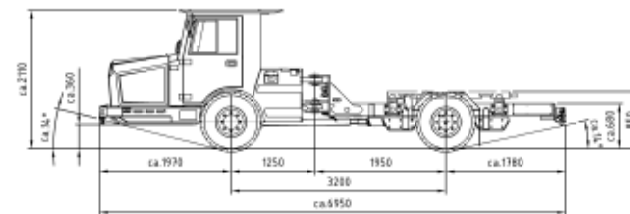
# UNI 40-SERIES

## TECHNICAL DATA:

|                           | UNI 40   |
|---------------------------|--|
| Payload                   | 7 t  |
| Operating Weight          | 5.5 t**  |
| Engine                    | Deutz, different exhaust stages available                                |
| Engine Power              | Up to 93 kW  |
| Chassis                   | Articulated-steered chassis  |
| Drive Unit                | Hydrostatic Drive  |
| Axles                     | Rigid planetary steering drive axles with oil-immersed multi-disk brakes |
| Tires                     | 35 x 15-15   |
| Speed                     | Up to 20 km/h  |
| Gradeability              | Up to max. 40%   |
| Environmental Temperature | -20°C up to +40°C  |

Further solutions, versions and configurations on request.

\*\*depending on selected version





## MinCa 18 A- SERIES

- Thanks to its extraordinary longevity, the MinCa 18 A is the vehicle of choice in the mining industry throughout the world.
- The special configuration with compact design has already been proven over many years in mining.
- The basic platform offers space for many different superstructures.
- Proven concept for personnel and material transport, as well as for special operations with load capacities of up to 4.0 tonnes.

### HIGHLIGHTS:

**COMFORT:** Spacious and enclosed ROPS/FOPS driver's cab with excellent all-around view

**POWERFUL AND MANOEUVRABLE:**

Robust full spring-suspended chassis with front-wheel steering, small turning radius and hydrostatic all-wheel drive up to 33 km/h

**SERVICE-FRIENDLY:** Optimal accessibility to the hydraulics, electrics, mechanics and engine

**ILLUMINATED:** LED lighting package, two work lights at back of the cab

**OPERATOR FRIENDLY:** Display for the analysis of important vehicle data as well as all status messages; additional display for diesel engine

**FLEXIBLE:** Attachments on fixed frame up to 4 to

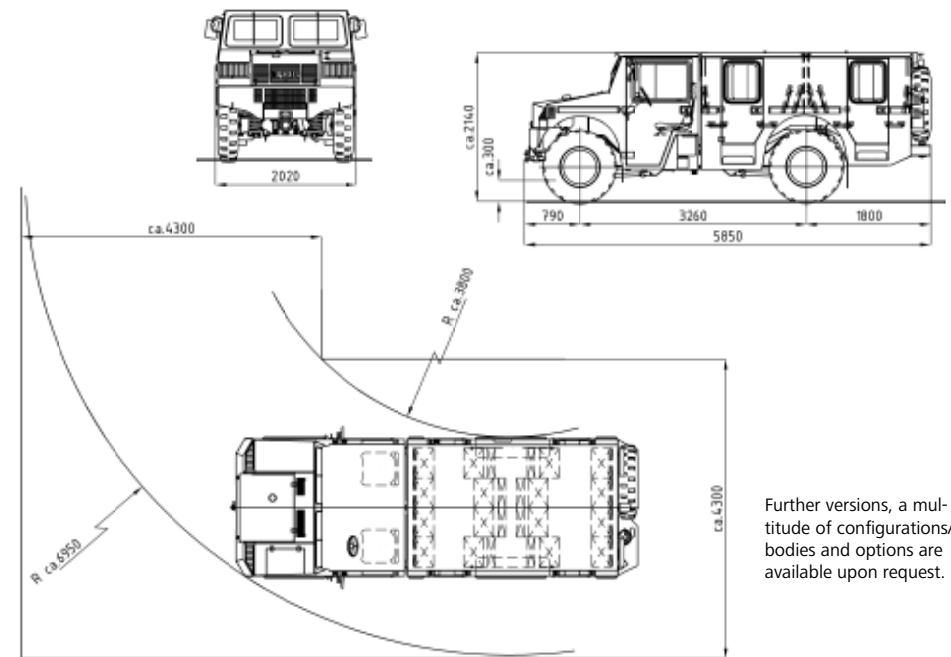


# MinCa 18 A-SERIES

## TECHNICAL DATA:

|                           | MinCa 18 A  |
|---------------------------|---|
| Payload                   | 4 t   |
| Operating Weight          | 5 t**, Carrier vehicle without rear attachment  |
| Engine Variants           | Deutz, different exhaust stages available   |
| Engine Power              | Up to 95 kW   |
| Chassis                   | Chassis with lead frame, steering axle at the front, suspended front and rear axle via coil springs with shock absorber |
| Drive Unit                | Hydrostatic Drive   |
| Axles                     | Dana 212 (front) and 112 (rear)   |
| Tires                     | 9.00 x 20   |
| Speeds                    | Up to 33 km/h   |
| Gradeability              | Max. 35%  |
| Environmental Temperature | -20°C up to +40°C   |

\*\*depending on selected version



Further versions, a multitude of configurations/bodies and options are available upon request.

## MinCa 5.1-SERIES

- For our customers, the MinCa 5.1 series is the most popularly used light vehicle in underground mining.
- The robust construction has proven to work reliably in tough underground mining conditions.
- The basic design of the MinCa 5.1 is the ideal platform for diverse applications.
- Ergonomically designed control elements increase convenience and efficiency.
- The compact structure, specially designed for mining, minimized operating costs and maximized service life.
- The suspension is unmatched in the industry, like MinCa 18.

### HIGHLIGHTS:

**COMFORT:** Spacious and enclosed ROPS/FOPS driver's cab featuring for up to 5 persons and excellent all-around view

**POWERFUL AND MANOEUVRABLE:**

Robust full spring-suspended chassis with front-wheel steering, small turning radius and hydrostatic all-wheel drive.

**PRACTICAL:** Optimal accessibility to the hydraulics, electrical system and engine components

**VISUALISATION:** Display for the analysis of important vehicle data as well as all status messages

**FLEXIBLE:** Available in a large number of configurations



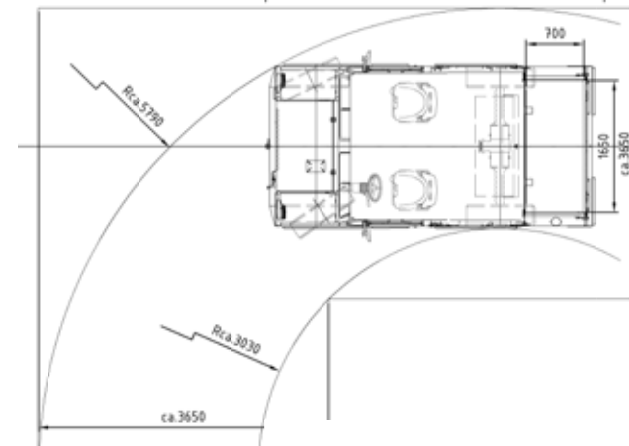
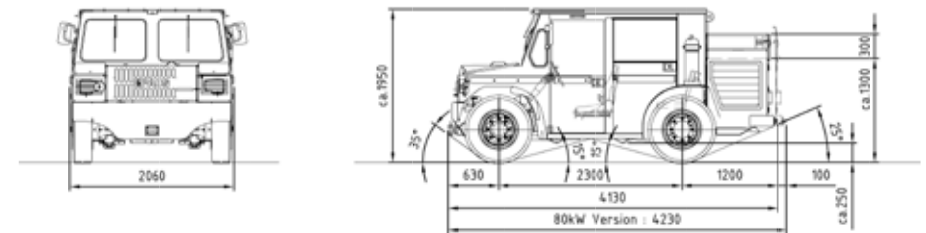


# MinCa 5.1-SERIES

## TECHNICAL DATA:

|                           | MinCA 5.1  |
|---------------------------|--|
| Payload                   | 1.2 t  |
| Operating Weight          | 4.2 t**  |
| Engine Variants           | Deutz, different exhaust stages available  |
| Engine Power              | Up to 80 kW  |
| Chassis                   | Self-supporting body, front steering axle, spring suspended front and rear axle, with shock absorber |
| Drive Unit                | Hydrostatic Drive  |
| Axles                     | Dana 211 (front) and 111 (rear)  |
| Tires                     | 8.25 x 15  |
| Speeds                    | Up to 30 km/h  |
| Gradeability              | Max. 35%   |
| Environmental Temperature | -20°C up to +40°C  |

\*\*depending on selected version



Further versions, a multitude of configurations/bodies and options are available upon request.



## MinCa 5.1 E- SERIES

In addition to the advantages of the conventionally powered MinCa 5.1, the MinCa 5.1 E offers additional advantages:

- Low maintenance and servicing costs.
- The MinCa 5.1 E is emission-free.
- Exceptionally high gradeability performance.
- Perfect for a 8 hour shift.

### HIGHLIGHTS:

**COMFORT:** Spacious, enclosed ROPS/FOPS driver's cab for the transport of 5 persons

**POWERFUL AND MANOEUVRABLE:**

Robust full spring-suspended chassis with front-wheel steering, small turning radius and hydrostatic all-wheel drive

**PRACTICAL:** Optimal accessibility to the hydraulics and electrical system

**VISUALISATION:** Display for the analysis of important vehicle data as well as all status messages

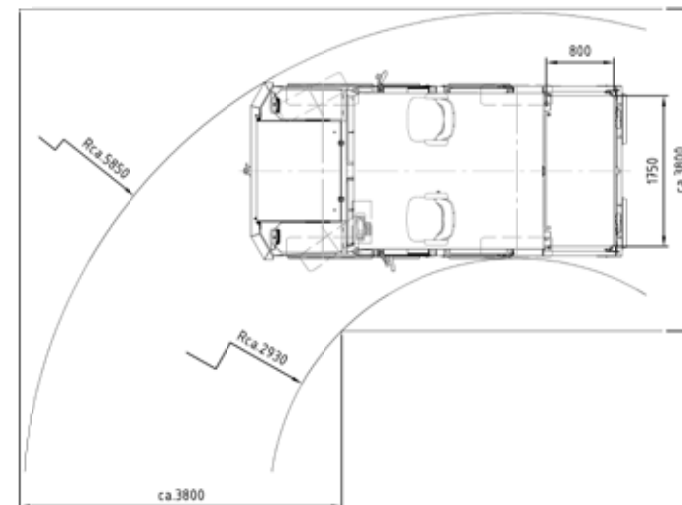
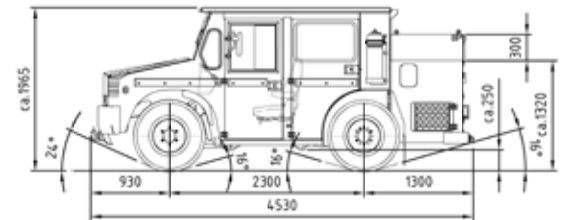
**ENDURANCE:** Large 50 kWh Li-Ion battery package, optionally expandable by another 50 kWh package



# MinCa 5.1 E-SERIES

## TECHNICAL DATA:

|                           | MinCa 5.1 E  |
|---------------------------|--|
| Payload                   | 1.2 t  |
| Operating Weight          | 4.5 t**, self-supporting body  |
| Engine Variants           | Danfoss, Electric Motor  |
| Engine Power              | Up to 60 / 99 KWh  |
| Chassis                   | Self-supporting body, front steering axle, spring suspended front and rear axle, with shock absorber |
| Drive Unit                | Electric Drive   |
| Axles                     | EME P174 (front) and P172 (rear)   |
| Tires                     | 8.25 x 15  |
| Speed                     | Up to 30 km/h  |
| Gradeability              | Max. 35%   |
| Environmental Temperature | -20°C up to +35°C  |



\*\*depending on selected version

Further versions, a multitude of configurations/bodies and options are available upon request.





## GRADER

- The hydrostatic drive offers the optimum combination of speed and tractive effort, especially on gradients.
- Extremely manoeuvrable due to the combination of front steering axle and articulated steering.
- The oscillating front axle ensures that the tyres keep their grip even when the level of the floor is very uneven.
- Many equipment options are available. E.g. instead of the front counterweight of the standard version, a front blade can be selected.

### HIGHLIGHTS:

**CONVENIENT:** Spacious, enclosed ROPS/FOPS driver's cab

**CLEAR:** Unobstructed view over the working area

**POWERFUL AND MANOEUVRABLE:** Robust chassis with front axle steering and articulated steering and with hydrostatic all-wheel drive

**MAINTENANCE-FRIENDLY:** Optimal accessibility to the hydraulics, electrical system and mechanical components

**ILLUMINATED:** LED lighting package, featuring 2x2 work lights at the cab

**VISUALISATION:** Display for the analysis of important vehicle data as well as all status messages; additional display for diesel engine

**FLEXIBLE:** Two speeds – 8 km/h working gear or 20 km/h in high gear



# GRADER

## TECHNICAL DATA:

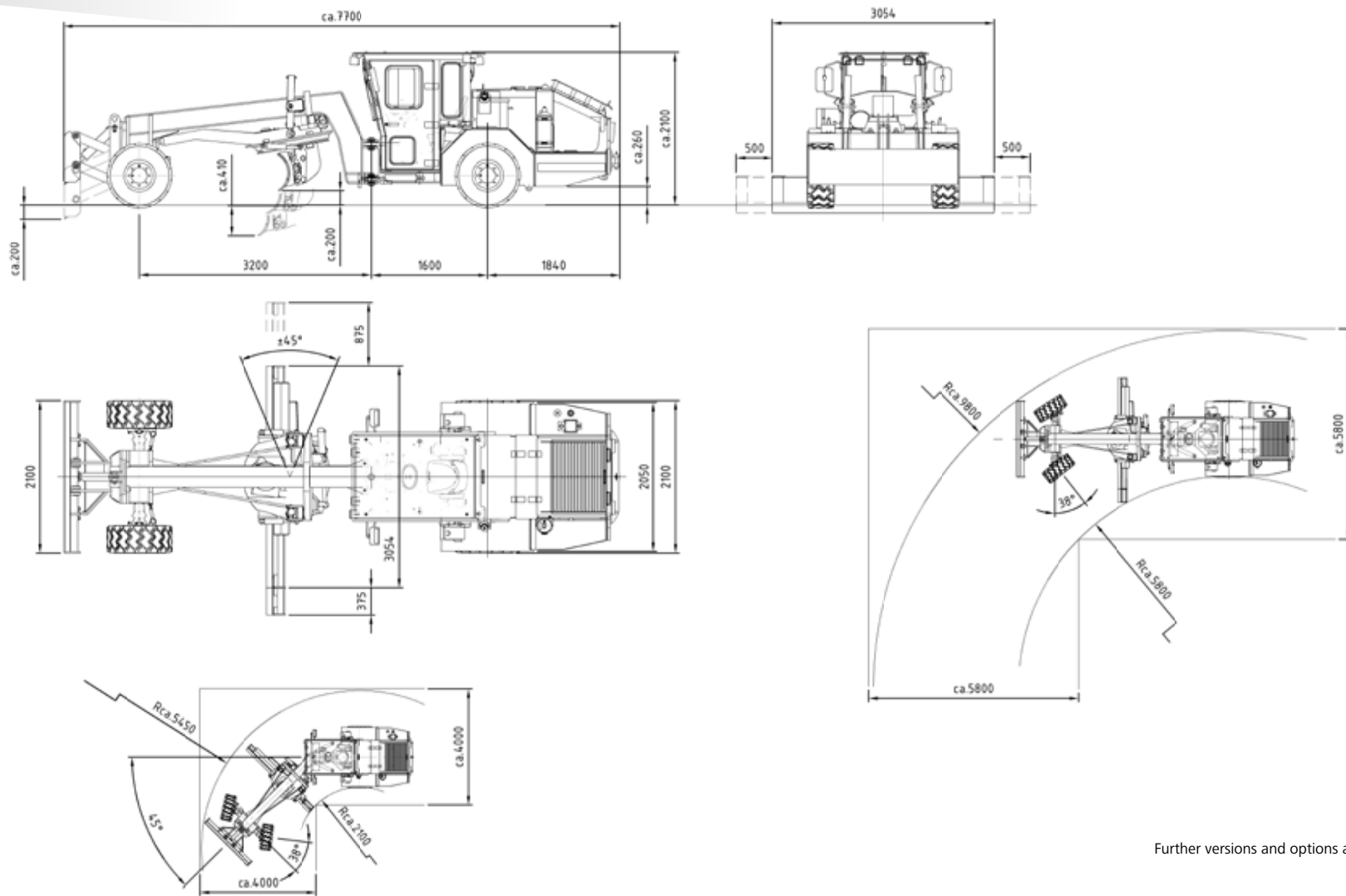
|                           | <b>PG 10 HA</b>                                      |
|---------------------------|--|
| Operating Weight          | 11.5 t**   |
| Engine Variants           | Deutz, Cummins<br>different exhaust stages available |
| Engine Power              | Up to 127 kW   |
| Working Width             | 3054 mm  |
| Side Shift                | +/- 500 mm   |
| Working Depth, max.       | Up to 410 mm   |
| Slewing Angle             | +/- 45°  |
| Chassis                   | Articulated steering, with oscillating front axle    |
| Drive Unit                | Hydrostatic Drive                                    |
| Axles                     | Dana   |
| Tires                     | 12.00 x 20   |
| Speed                     | Up to 20 km/h  |
| Tow Capacity              | 70 kN  |
| Gradeability              | Max. 35%   |
| Environmental Temperature | -20°C up to +40°C                                    |

\*\*depending on selected version



## GRADER

# FOR RELIABLE, HIGH-LEVEL ROUTE MAINTENANCE



Further versions and options are available upon request.





## SCALER

- The mobility is unmatched by articulated steering and swivel-mounted boom at the scaler machines 853 S8 and 1253 S10, which enables sensitive and precise roof scaling operation.
- Paus scalers provide low operating costs and offer a high degree of safety during scaling in small cross sections.
- The optional „Plug and Play“ function for radio remote control enables a high degree of safety for the operator even in highly endangered areas.
- The robust design specially designed for mining minimizes operating costs, maximizes the service life and lifetime and thus the economic efficiency of the entire machine.

### HIGHLIGHTS:

**SAFE:** Spacious, enclosed ROPS/FOPS driver's cab

**CLEAR:** Excellent visibility of the working area

**PRODUCTIVE:** Precise scaling reduces mining waste and tool wear

**PRACTICAL:** Optimal accessibility of hydraulics, electrical system and engine

**ILLUMINATED:** LED lighting package, featuring 2x2 work lights at the cab

**VISUALISATION:** Display for the analysis of important vehicle data as well as all status messages

**FLEXIBLE:** Two driving modes: 8 km/h working mode or 20 km/h fast mode





# SCALER

## TECHNICAL DATA:

|                           | 853 S8   | 1253 S10  |
|---------------------------|--|-----------|
| Hammer Weight             | 300 kg   |           |
| Operating Weight          | 8.8 t**  | 12.5 t**  |
| Engine Variants           | Deutz, different exhaust stages available              |           |
| Engine Power              |  |           |
| Chassis                   | Articulated steering with oscillating rear axle        |           |
| Drive Unit                | Hydrostatic Drive                                      |           |
| Axles                     | Planetary rigid axles, rear oscillating axle, lockable |           |
| Tires                     | 9.00 R 20 (10.00 R 15)                                 | 15.5 R 25 |
| Speeds                    | Up to 20 km/h  |           |
| Gradeability              | Max. 40 %  |           |
| Environmental Temperature | -20°C up to +40°C                                      |           |

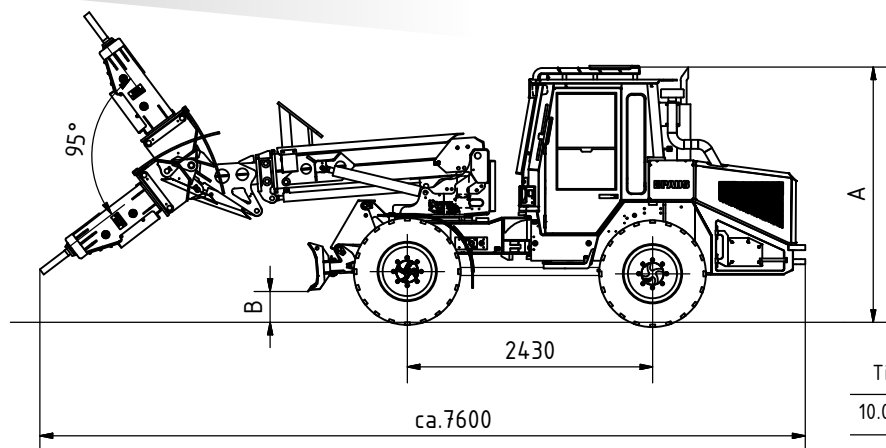
\*\*depending on selected version



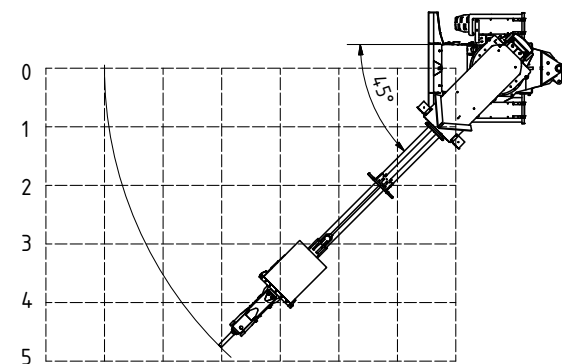
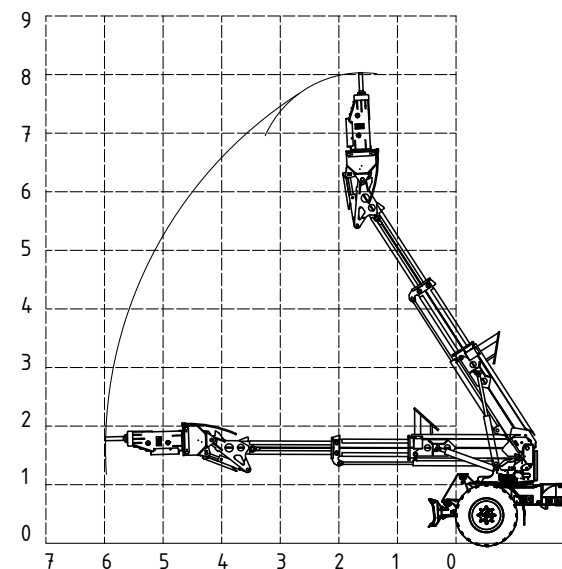
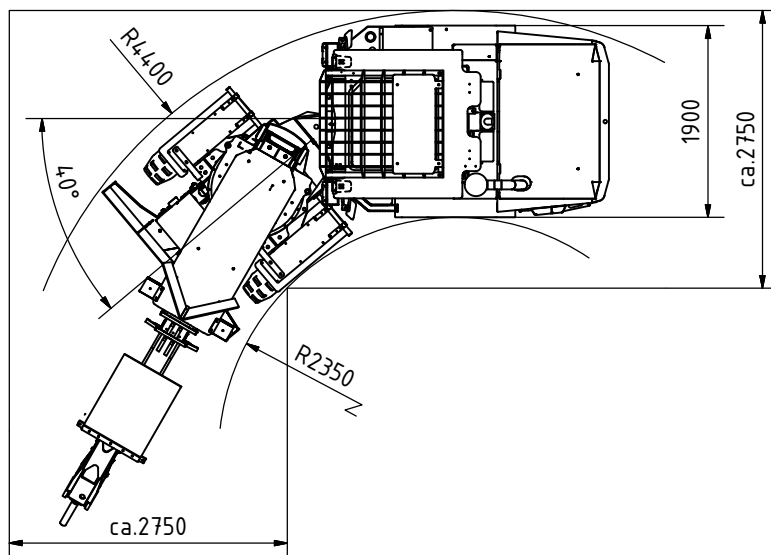


# FOR SAFE AND PRODUCTIVE SCALING IN UNDERGROUND MINING

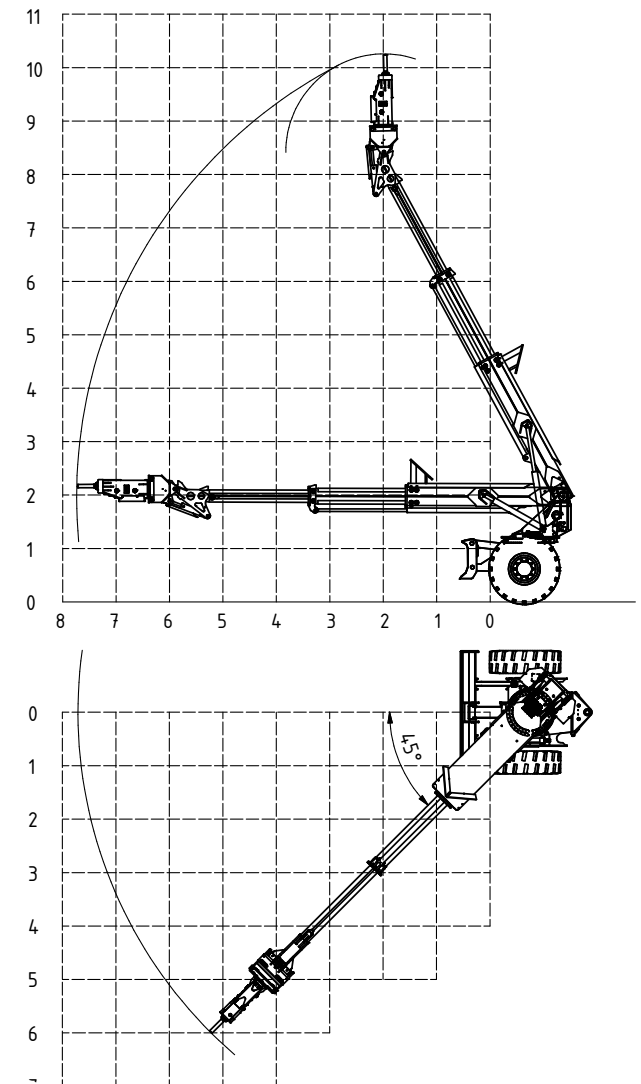
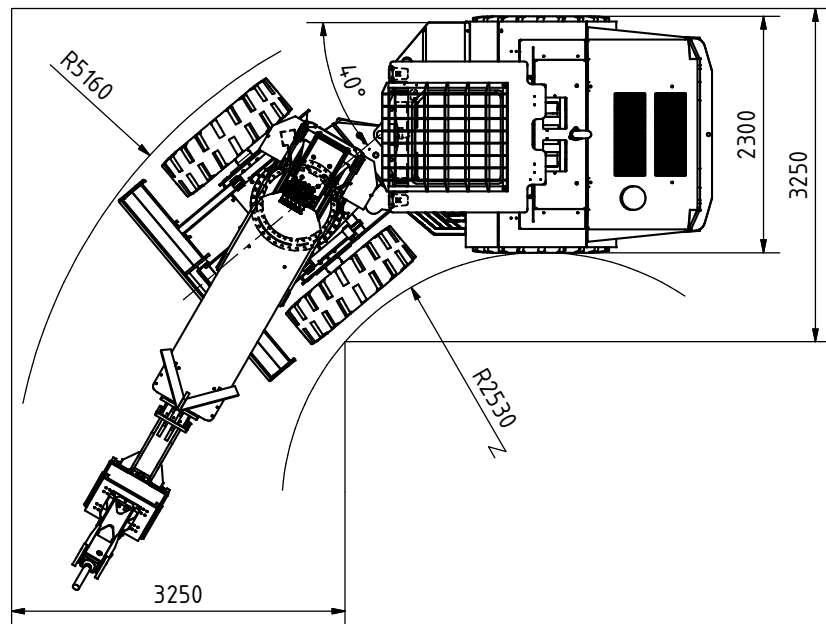
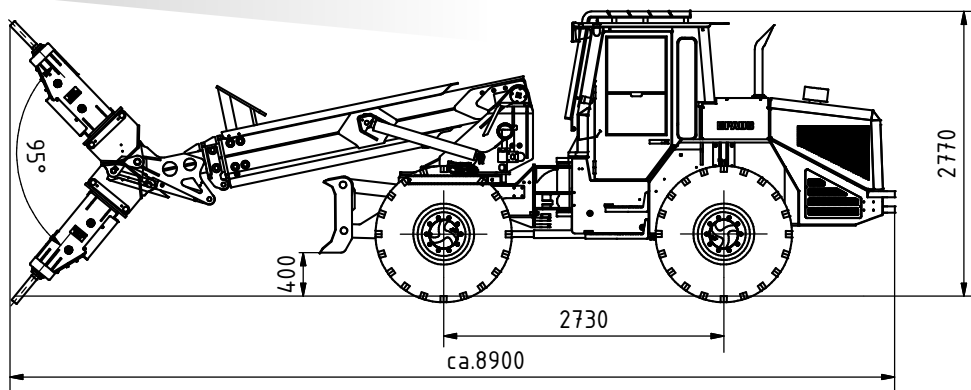
## SCALER 853 S8



| Tires     | height A | height B |
|-----------|----------|----------|
| 10.00-R15 | 2485     | 240      |
| 9.00-R20  | 2525     | 280      |



## SCALER 1253 S10



## LHD LOADER

- The Paus LHD product series convinces with state-of-the-art technology, which offers our customers „more“ in productivity, safety and profitability.
- The Paus LHDs have an excellent payload-to-weight ratio.
- Highest breakout forces and fastest bucket filling times for low production costs per transported ton.
- The side-seated operator's cabin with front access offers a high level of comfort and safety.

### HIGHLIGHTS:

**POWERFUL AND MANOEUVRABLE:** Robust chassis with articulated steering and e.g. hydrostatic drive

**PRACTICAL:** Optimal accessibility to the hydraulics, electrical system and engine

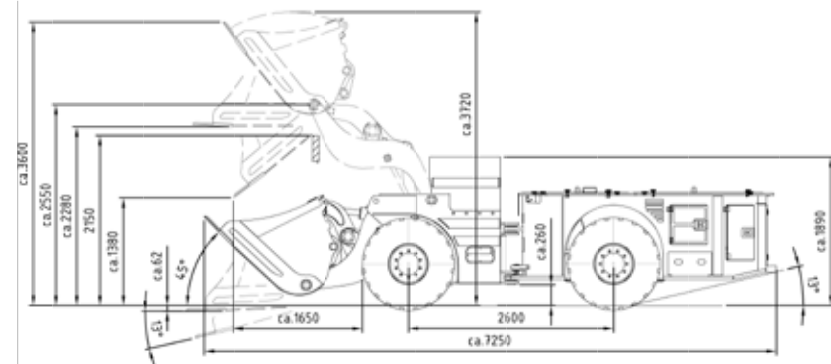
**ILLUMINATED:** LED lighting package, featuring 2x2 work lights at the cab

**SAFE:** Ergonomic and ROPS/FOPS driver's conopy

**ECONOMICAL:** Excellent operating weight-payload ratio



Technical drawing PFL 20





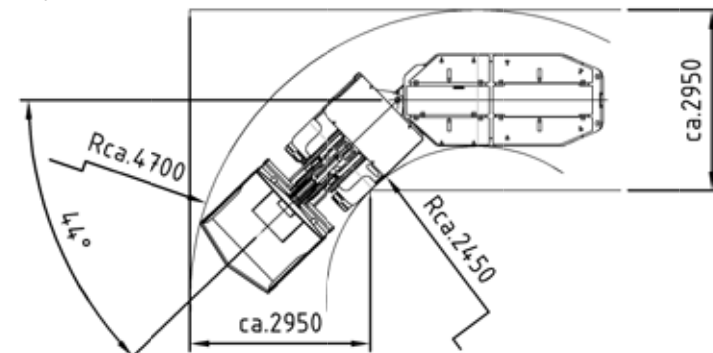
# PFL-SERIES

## TECHNICAL DATA:

|                           | PFL 8                                     | PFL 10   | PFL 20                                 | PFL 30             |
|---------------------------|---|--|--|--------------------|
| Payload                   | 1.5 t                                     | 2.7 t  | 4 t                                    | 6 t                |
| Dump box volume heaped    | 0.8 m <sup>3</sup>                        | 1.3 m <sup>3</sup>                                 | 2.0 m <sup>3</sup>                     | 3.0 m <sup>3</sup> |
| Breakout Force            | Up to 40 kN                               | Up to 50 kN  | Up to 85 kN                            | Up to 115 kN       |
| Operating Weight          | 6.3 t**                                   | 9 t**  | 11.5 t**                               | 18.5 t**           |
| Engine Variants           | Deutz, different exhaust stages available | Deutz, Cummins, different exhaust stages available |  |                    |
| Engine Power              | 69 kW                                     | 84 kW  | 112 kW                                 | 150 kW             |
| Chassis                   | Articulated steering, center oscillation  | Articulated steering with oscillating rear axle    |  |                    |
| Drive Unit                | Hydrostatic Drive                         |  | Hydrodynamic drive, "full power shift" |                    |
| Axles                     | Comer 128                                 | Kessler D71  | Kessler D71                            | Kessler D91        |
| Tires                     | 9.00 x 20                                 |  | 12.00 x 20                             | 17.50 x 25         |
| Speed                     | Up to 15 km/h                             | Up to 18 km/h                                      | Up to 25 km/h                          | Up to 25 km/h      |
| Gradeability              | Max. 35%                                  |  | Max. 35%                               |                    |
| Environmental Temperature | -20°C up to +40°C                         |  | -20°C up to +40°C                      |                    |

\*\*depending on selected version

Technical drawing PFL 20



Further versions and options are available upon request.



## DUMP TRUCKS

- Paus dump trucks are the ideal solution for comfortable, safe and economical transport in underground hard rock mining over long distances with extreme gradients.
- With the Paus Dump Trucks, short cycle times are ensured by the powerful drive and the high manoeuvrability.
- The robust and compact design of the Paus dump trucks provides high reliability and a long service life.
- For special applications and greater flexibility, our customers can choose from additional versions such as ejector wall or interchangeable frames or concrete mixers for tunnelling work.
- Safety, ease of operation and maintenance are always the focus at Paus in order to deliver high productivity.

### HIGHLIGHTS:

**TOUGH:** Designed, for the toughest hard rock deployment, featuring ROPS/FOPS cab

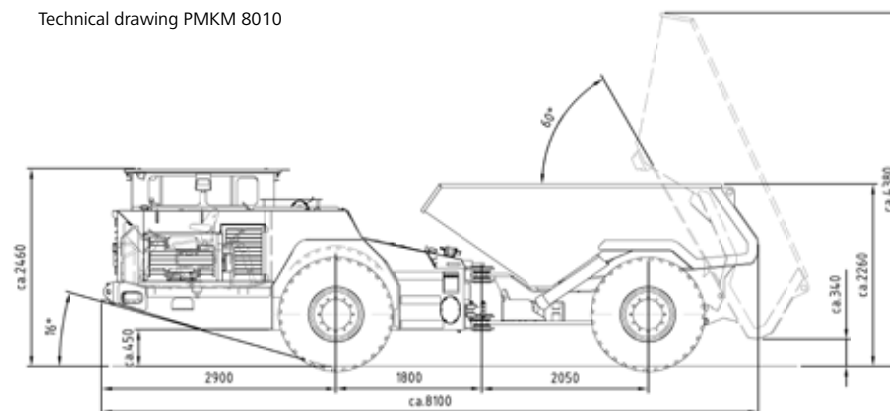
**CLEAR:** Driver's seat that can rotate by 180° with a separate control panel for both directions and optimal visibility over the skip – even while travelling in reverse

**SERVICE-FRIENDLY:** Excellent accessibility to the engine, hydraulics and filter

**FLEXIBLE:** Individual adaptations possible. Also available with hydraulic change systems for concrete or scissor platforms, among other things



Technical drawing PMKM 8010



# DUMP TRUCKS

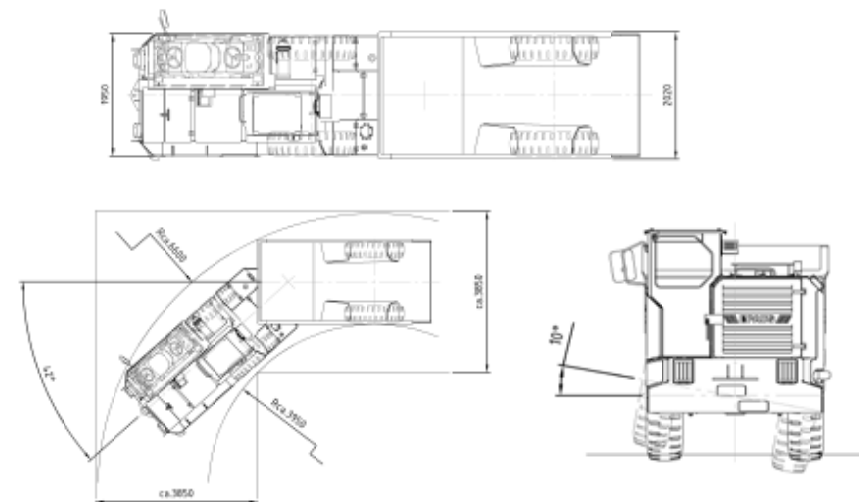
## TECHNICAL DATA:

|                           | PMKM/-T/-S 8000 SERIES   | PMKM/-T/-S 10000 SERIES   | PMKM/-T/-S 12000 SERIES  |
|---------------------------|--|---|--|
| Payload                   | 16 t   | 22 t  | 27 t   |
| Dump box volume heaped    | 8 m <sup>3</sup>   | 11.5 m <sup>3</sup>   | 14 m <sup>3</sup>  |
| Operating Weight          | 17 t**   | 22 t**  | 26 t**   |
| Engine Variants           | Deutz, Cummins, Caterpillar, Mercedes Benz, different exhaust stages available | Deutz, Caterpillar, Mercedes Benz, different exhaust stages available | Deutz, Cummins, Caterpillar, Mercedes Benz, different exhaust stages available |
| Engine Power              | Up to 170 kW   | Up to 227 kW  | Up to 280 kW   |
| Chassis                   | Articulated steering, with oscillating front axle                              |   |  |
| Drive Unit                | Hydrodynamic drive, "full power shift"   |   |  |
| Axles                     | Dana 17D   | Kessler D81   | Kessler D91  |
| Tires                     | 16.00 R 25   | 16.00 R 25  | 18.00 R 25   |
| Speed                     | Up to 30 km/h  | Up to 25 km/h   | Up to 25 km/h  |
| Gradeability              | Max. 35%   |   |  |
| Environmental Temperature | -20°C up to +40°C  |   |  |

\*\*depending on selected version

Further versions and options are available upon request.

Technical drawing PMKM 8010







## SERVICE

# WE ARE WHERE OUR CUSTOMERS ARE

## MAINTENANCE & REPAIR

Repairs and maintenance operations are central points in customer service. Paus offers its customers a comprehensive service program:

- Repairs on site or at the factory by our factory technicians
- Repair by our constantly trained, regional service partners
- Customer support for technical inquiries with our service consultants

Another part of our customer service is the technical information service. Trained staff are available under our service hotline in the factory or at our dealers on site. Simply download the machine documentation and repair instructions online. Or contact us by telephone or e-mail for quick and easy training and commissioning.

## SPARE PARTS

We emphasize a high availability of Paus spare parts. In addition to maintenance and service parts, which are available at all times, we offer our customers the possibility of ordering spare parts for engines, axles, transmissions, etc. via to relate to us. Furthermore, maintenance and service packages defined on an ongoing basis are available from us.

We provide this fast and uncomplicated service through a comprehensive concept of disposition, warehousing and logistics. This means that we always have a demand-oriented stock available for our customers at the Paus central warehouse in Emsbüren. Support depots, e.g. in Russia, also shorten reaction times. All types of shipping from courier to collection are possible.

In addition, Paus offers its customers a defined exchange parts program: customers can send in defective components and receive fully refurbished exchange parts from us or our partner companies, even in advance if required. Please do not hesitate to contact us. Another plus: A suggestion for spare parts stocking that is worked out according to customer requirements is also part of the Paus service program. Paus also supplies an electronic spare parts catalogue with each machine delivery.

We are also happy to provide specific advice, if necessary at our customers' site.

### YOU WANT TO ORDER SPARE PARTS?

Enjoy the benefits of our online spare parts catalogue:

### QUESTIONS ABOUT THE SPARE PARTS CATALOGUE?

You do not have access data, simply contact us by using our info email: [spareparts@paus.de](mailto:spareparts@paus.de)









**SINCE 1968**

**WWW.PAUS.DE**



**HERMANN PAUS MASCHINENFABRIK GMBH**

Siemensstraße 1-9 | D-48488 Emsbüren

Tel.: +49 (0) 59 03 - 7 07-0

Fax: +49 (0) 59 03 - 7 07-333

info@paus.de | www.paus.de

Find us on

#### WE CARE

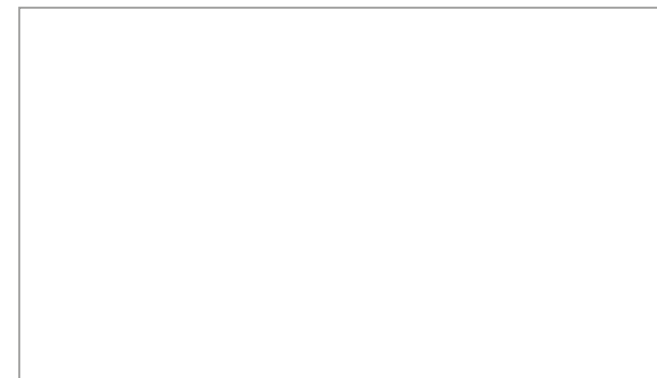
As a specialist for complete and special solutions Paus offers an extensive range of machines for mining and tunneling, lifttech and as well construction machines and industrial vehicles since 1968.

Paus stands for „Quality Made in Germany“.

Our quality management is certified according to ISO 9001.



#### YOUR DEALER



Legal Notice © Copyright 2019, Hermann Paus Maschinenfabrik GmbH, Emsbüren, Germany. Any unauthorized use or copying of the contents or any part is prohibited. Illustrations and photos may show equipment with optional extras. No warranty regarding these printed specifications. Specifications and equipment are subject to change without notice. Please contact the Hermann Paus Maschinenfabrik GmbH for further information.